



921

GAS PHOTOTUBE

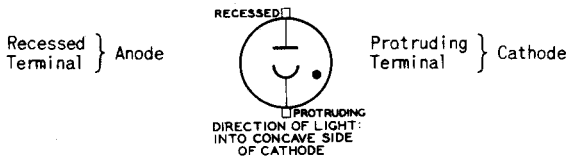
CARTRIDGE TYPE WITH S-1 RESPONSE

DATA

General:

Spectral Response	S-1
Wavelength of Maximum Response.	8000 ± 1000 Angstroms
Cathode:	
Shape	Semi-Cylindrical
Minimum Projected Length*	7/8"
Minimum Projected Width*.	1/2"
Direct Interelectrode Capacitance	1.0 μ f
Overall Length.	1-21/32" ± 1/16"
Seated Length	1-13/32" ± 1/32"
Length, Cathode Center to plane A-A' (See Outline)	11/16" ± 1/16"
Maximum Diameter.	0.890"
Mounting Position	Any
Terminal Caps	See Outline

BOTTOM VIEW



Maximum Ratings, Absolute Values:

ANODE-SUPPLY VOLTAGE (DC or Peak AC)	90 max.	volts
PEAK CATHODE CURRENT.	10 max.	μ amp
PEAK CATHODE-CURRENT DENSITY.	100 max.	μ amp/sq. in.
AVERAGE CATHODE CURRENT ^o	3 max.	μ amp
AMBIENT TEMPERATURE	100 max.	^o C

Characteristics:

	<u>Min.</u>	<u>Average</u>	<u>Max.</u>	
Dark Current at 90 Volts.	-	-	0.1	μ amp
Sensitivity:				
At 8000 Angstroms	-	0.0135	-	μ amp/ μ watt
Luminous: [▲]				
At 0 Cycles	75	135	205	μ amp/lumen ←
At 5000 Cycles.	-	119	-	μ amp/lumen
At 10000 Cycles	-	108	-	μ amp/lumen
Gas Amplification Factor.	-	-	10	

* On plane perpendicular to indicated direction of incident light.

o Averaged over any interval of 30 seconds maximum. Average current may be doubled when anode-supply voltage is limited to 70 volts.

▲ Measured under conditions specified on sheet "PHOTOTUBE SENSITIVITY and SENSITIVITY MEASUREMENTS", at the front of this Section.

← Indicates a change.

921



921

GAS PHOTOTUBE

Minimum Circuit Values:

DC Load Resistance:

With anode-supply voltage of 70 volts or less:

For dc currents	{	above 3 μ amp	. . . 0.1	. . . megohm
		below 3 μ amp	. . . No Minimum	

With anode-supply voltage of 90 volts:

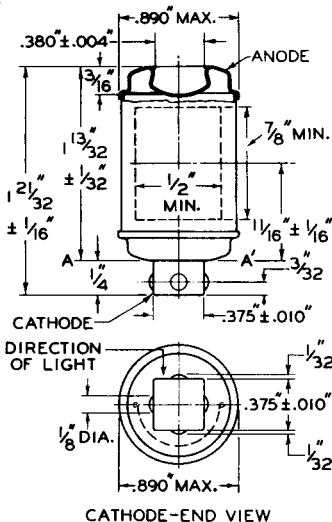
For dc currents	{	above 2 μ amp	. . . 2.5	. . . megohms
		below 2 μ amp	. . . 0.1	. . . megohm

SPECTRAL-SENSITIVITY CHARACTERISTIC
of Phototube having S-1 Response
and

FREQUENCY-RESPONSE CHARACTERISTICS
of Gas Phototubes

are shown at the front of this Section

AVERAGE ANODE CHARACTERISTICS
of Type 921 are the same
as those shown under Type 930



92CM-4789R4