



1949

1949

VACUUM-GAUGE TUBE

HARD-GLASS BULB, IONIZATION TYPE

DATA

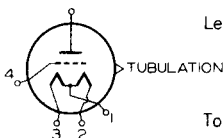
General:

Filament, Tungsten:*	
Voltage (Approx.)	5 ac or dc volts
Current (Approx.)	3.5 amp
Maximum Tube Length (including tubulation)	11-1/2"
Maximum Tube Radius	2-3/16"
Maximum Bulb Length	5-1/8"
Maximum Bulb Diameter	2-1/16"
Bulb	T-16
Tubulation	1/2" Diameter Hard Glass, Corning Code 772 Nonex
Operating Position	Vertical with tubulation up or down; Horizontal, with stem press in vertical plane
Terminal Arrangement	See Outline Drawing
Terminal Lead Connections:	

Lead 1 - Common
 Lead to
 Filaments

Lead 2 - Filament

Lead 3 - Filament
 (Spare)



Lead 4 - Grid

Top Lead - Plate

Maximum Ratings, Absolute Values:

PLATE VOLTAGE	-100 max.	volts
GRID VOLTAGE	+200 max.	volts
AMBIENT TEMPERATURE	100 max.	°C
GAS PRESSURE	0.001 max.	mm of Hg.

Typical Operation:

Plate Voltage	-22.5	-22.5	-22.5	volts
Grid Voltage	+80	+110	+160	volts
Grid Current	10	10	10	ma.
Sensitivity	80	110	140	μamp/micron [▲]

Calibration:

See curve on following sheet.

* The 1949 contains two filaments, one of which is a spare. Values shown are for either filament operated alone.

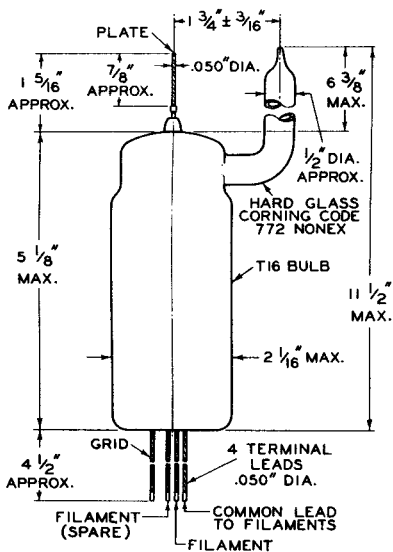
▲ 1 micron = 0.001 mm of mercury.

1949



1949

VACUUM-GAUGE TUBE



92CS-6817



1949

1949

CALIBRATION CURVES

