



THYRATRON

METAL MERCURY-VAPOR TETRODE

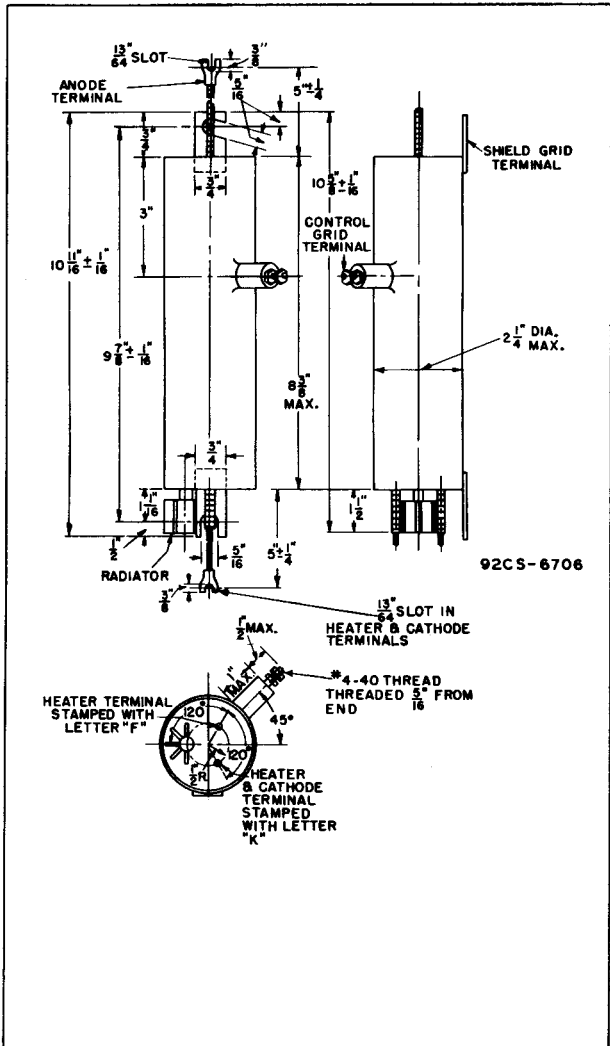
Electrical:	DATA				
	Continuous Service		Welder-Control Service		
Heater, for Unipotential Cathode:					
Voltage*	5.0	5.0	5.0	5.5	volts
Current	10.0	10.0	10.0	11.0	amp
Direct Interelectrode Capacitance (Approx.):					
Grid No.1 to Anode	0.07	0.07	0.07	0.07	μmf
Peak Voltage Drop . .	16	16	16	16	volts
Approx. Control Characteristics:					
Anode Voltage . . .	100	2000	100	2000	volts
Grid-No.1 Voltage .	+1.0	-14	+1.0	-14	volts
Grid-No.2 Voltage .	0	0	0	0	volts
Ionization Time (Approx.)	10	10	10	10	μsec
Deionization Time (Approx.)	1000	1000	1000	1000	μsec
Mechanical:					
Mounting Position	Vertical, Radiator Down				
Overall Rigid Length.	10-11/16" ± 1/16"				
Greatest Radius	2-5/8"				
Terminals	See Outline Drawing				
Maximum Ratings, Absolute Values:					
	Continuous Service	Welder-Control Service			
PEAK FORWARD ANODE VOLT. .	2000 max.	750 max.	750 max.	volts	
PEAK INVERSE ANODE VOLT. .	2000 max.	750 max.	750 max.	volts	
GRID-No.1 (CONT. GRID) VOLT.:					
Before Conduction	-1000 max.	-1000 max.	-1000 max.	volts	
During Conduction	-10 max.	-10 max.	-10 max.	volts	
GRID-No.2 (SHL'D GRID) VOLT.:					
Before Conduction	-300 max.	-300 max.	-300 max.	volts	
During Conduction	-5.0 max.	-5.0 max.	-5.0 max.	volts	
INSTANTANEOUS ANODE CUR.:					
Below 25 Cycles	13.0 max.	13.0 max.	13.0 max.	amp	
25 Cycles and Higher. . .	40 max.	77 max.	77 max.	amp	
AVERAGE ANODE CURRENT** . .	6.4 max.	2.5 max.	2.5 max.	amp	
SURGE ANODE CURRENT for					
0.1 sec. max.	400 max.	400 max.	400 max.	amp	
INSTANTANEOUS GRID-No.1 CUR.	1.0 max.	1.0 max.	1.0 max.	amp	
AVERAGE GRID-No.1 Cur.** .	0.25 max.	0.25 max.	0.25 max.	amp	
INSTANTANEOUS GRID-No.2 CUR.	2.0 max.	2.0 max.	2.0 max.	amp	
AVERAGE GRID-No.2 Cur.** .	0.5 max.	0.5 max.	0.5 max.	amp	
COND.-MERCURY TEMP. RANGE [▲]	40 - 80	30 - 95	30 - 95	°C	
* Must be applied at least 5 minutes before anode voltage is applied.					
** Averaged over any 15-second interval.					
▲ Recommended condensed-mercury temperature 40°C.					

172



172

THYRATRON



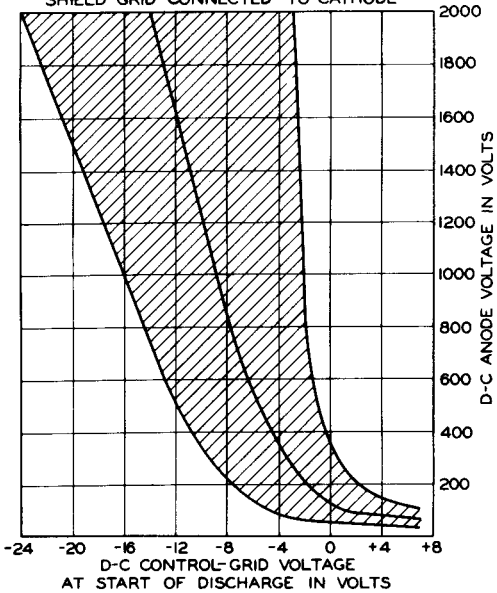


172

THYRATRON

172

TYPICAL CONTROL CHARACTERISTIC
SHADED AREA SHOWS RANGE OF CHARACTERISTIC
CONDENSED-MERCURY TEMP. 40°C
SHIELD GRID CONNECTED TO CATHODE



92CS-6698